

# Weld Fit Welded Hubs and Sprockets

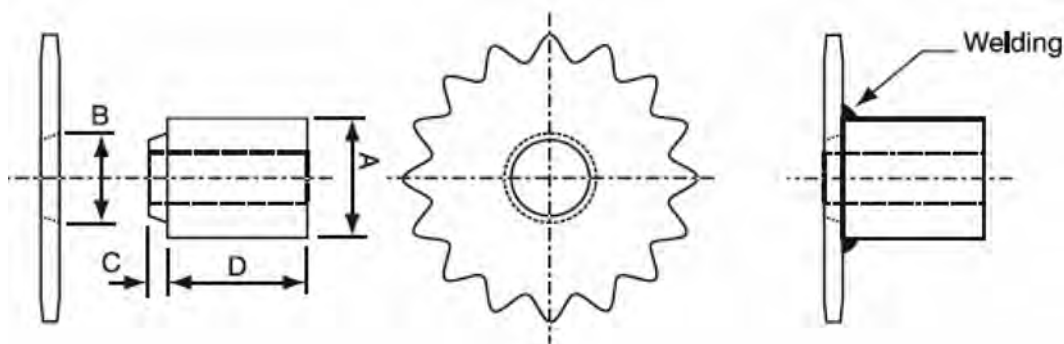
“Why compete against your supplier when you can be our partner”

Welded Hubs For use with Welded Sprockets	VT Series Hub		WT Series Hub		XT Series Hub	
	For VT sprockets		For WT sprockets		For XT sprockets	
A	34mm	(1-5/16)	45mm	(1-3/4)	62mm	(2-7/16)
B	30mm	(1-3/16)	41mm	(1-5/8)	57mm	(2-1/4)
C	12mm	(1/2)	12mm	(1/2)	12mm	(1/2)
D	30mm	(1-3/16)	37mm	(1-7/16)	37mm	(1-7/16)

BORE						
Inch	mm	Inch	mm	Inch	mm	
1/2	12	1/2	12	1/2	12	
	14		14		14	
5/8	15	5/8	15	5/8	15	
	16		16		16	
3/4	18	3/4	18	3/4	18	
	19		19		19	
7/8	20	7/8	20	7/8	20	
	22		22		22	
		1	24	1	24	
			25		25	
		1-1/8	28	1-1/8	28	
			30		30	
		1-1/4	32	1-1/4	32	
					35	
					38	
					40	
					42	
					45	
					1-3/4	

Welded Hubs and Sprockets



Notes

- 1) Welding with low hydrogen electrodes is recommended
- 2) Keyways conform to BS 46 (imperial) and BS 4235 (metric)